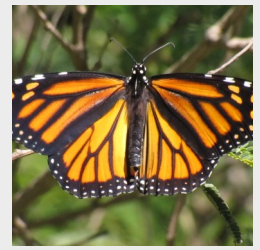




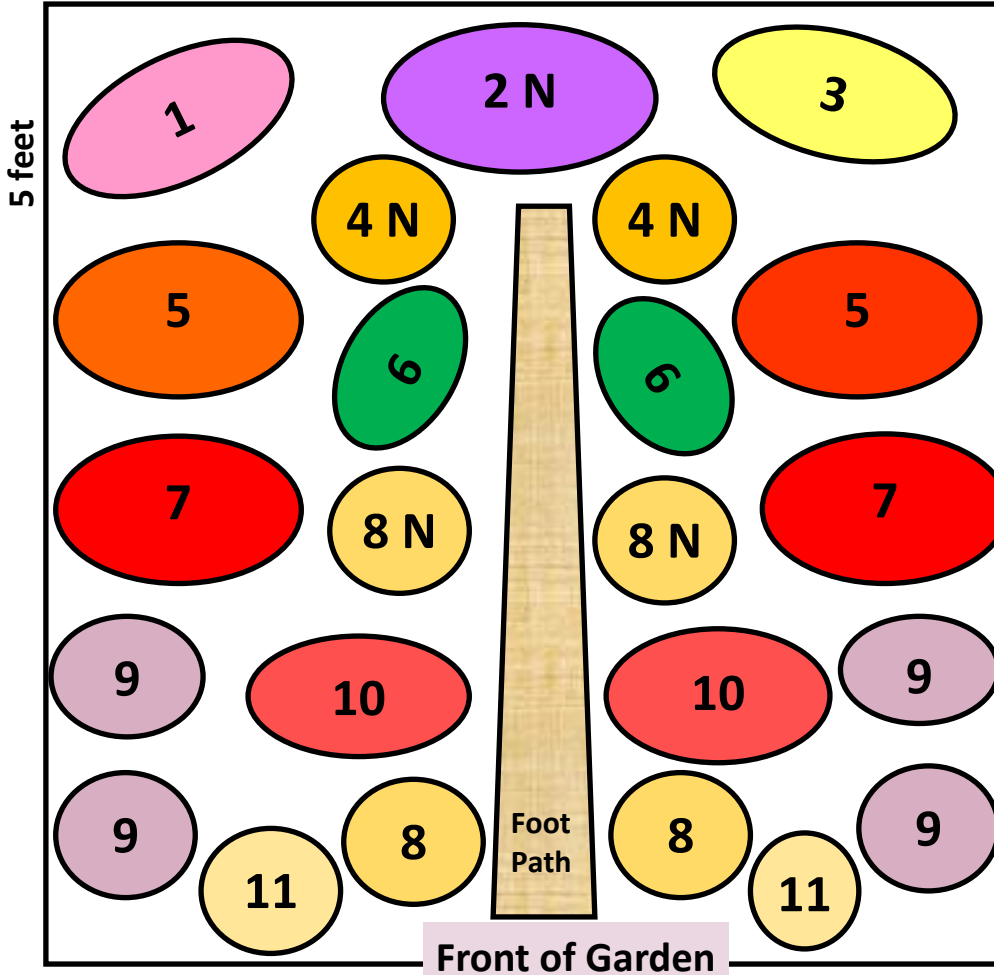
Blueprint for 5' By 5' Butterfly Garden

Sun to Partial Shade



"Always keep butterflies in your field of vision" — Catherine LaBrie

5 feet (N with number in diagram = native plant)



Garden Tips:

- Select native plants as much as possible
- Buy from nurseries that do not treat plants with pesticides
- Water well until established, then fairly drought tolerant
- Mulch with sustainable mulch (ex. Florimulch)
- Lightly fertilize with time released 5-10-10:
 - On planting
 - Every month during rainy season
 - Every other month rest of year
- Trim, deadhead as needed



Key (1 gallon-sized containers unless as noted):

- | | |
|--|--|
| <ol style="list-style-type: none"> 1. Dwarf Powder Puff (3 gallon): Nectar Plant, 2. Two Native Passionvines on structures: Host plant Gulf Fritillary and Zebra Heliconian 3. Cassia Bicapsularis or other smaller cassia (3 gallon): Nectar and host plant Sulphurs 4. Three Rudbeckias: Nectar plant 5. Five Milkweed, Tropical or Native: Nectar and host plant Monarchs & Queens | <ol style="list-style-type: none"> 6. Three Dill or Fennel: Host plant Black Swallowtail 7. Three red, pink or white standard Pentas: Nectar plant 8. Three Coreopsis: Nectar plant 9. Two purple Lantana: Nectar plant 10. Three Tropical Sage (salvias), red, pink or white: Nectar plant 11. Two yellow Lantana: Nectar Plant |
|--|--|